

# VIY5-1500

## Ground Penetrating Radar

User friendly and low cost system for diverse application. VIY®5-1500 is suitable for inspection concrete other structures.

With VIY®5-1500, you can quickly detect position and depth of metallic and non-metallic objects:

- metal utilities, including pipes and cables
- non-metallic pipes, including PVC and asbestos cement ones
- positions of rebars
- moisture zones
- subsurface objects (voids, cracks, heterogeneous inclusions)

# VI45-1500 GPR



## Wide Operation Possibilities

- Simplified interface for basic applications
- Wide range of abilities in standard interface



## Connections

- USB connections
- Standard extender can be used



## No Need Battery

- Powered from computer's USB port



## GPR Antenna

- Shield antenna systems
- Exchangeable bottom protector
- Original "Telbin" technology
- Built-in tilt sensors
- Robust fiberglass body
- Low power consumption
- Powered from computer USB port



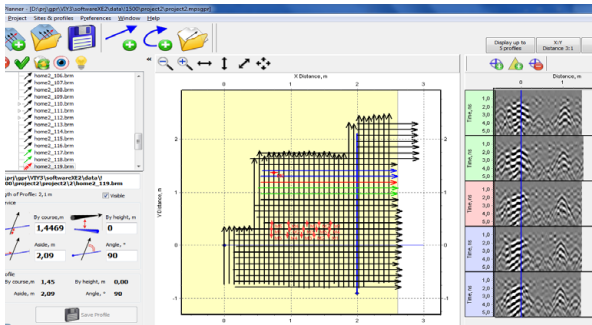
## Any Windows Computer

- Any Windows-based computer is applicable
- The antenna directly connects to PC

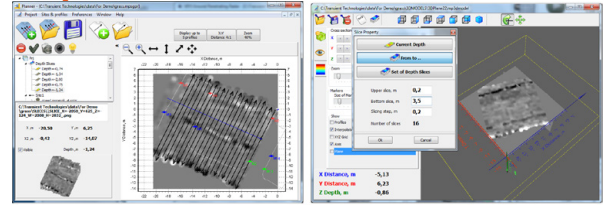


# VIY5-1500 GPR

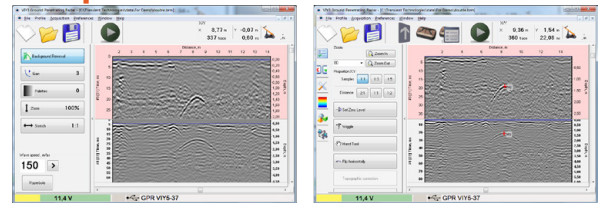
## Arbitrary Positions of GPR Profiles in Project



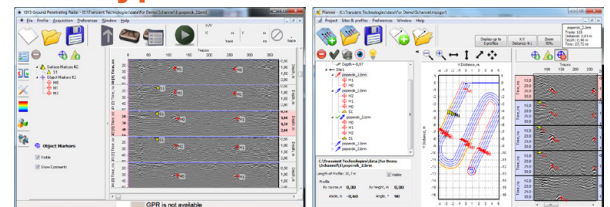
## Depth Slices



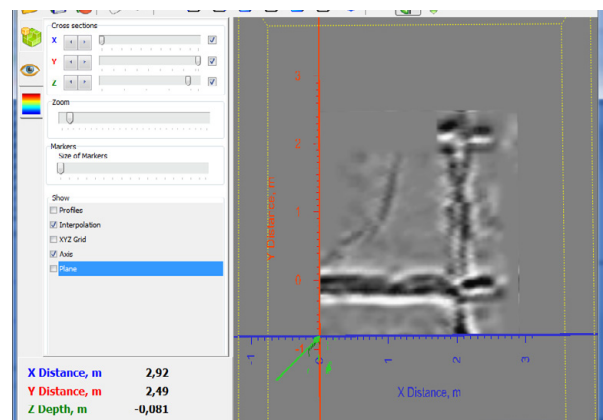
## Simplified or Advanced Interface



## Two Types of Markers



## 3D Visualization





## VIY<sup>®</sup>5-1500 Specifications

Antenna frequency	1500 MHz
Survey window	8, 12, 16, 20 ns
Depth of sounding up to (determined by soil properties)	0,5 m
Spatial resolution (better than)	0,03 m
Trigger mode	single, internal, external
Dimensions of antenna, L x W x H	190 x 140 x 40 mm
Weight of antenna	0,6 kg
Operating temperature range	-20°C to +40°C
Operation time	limited only working time of the laptop